

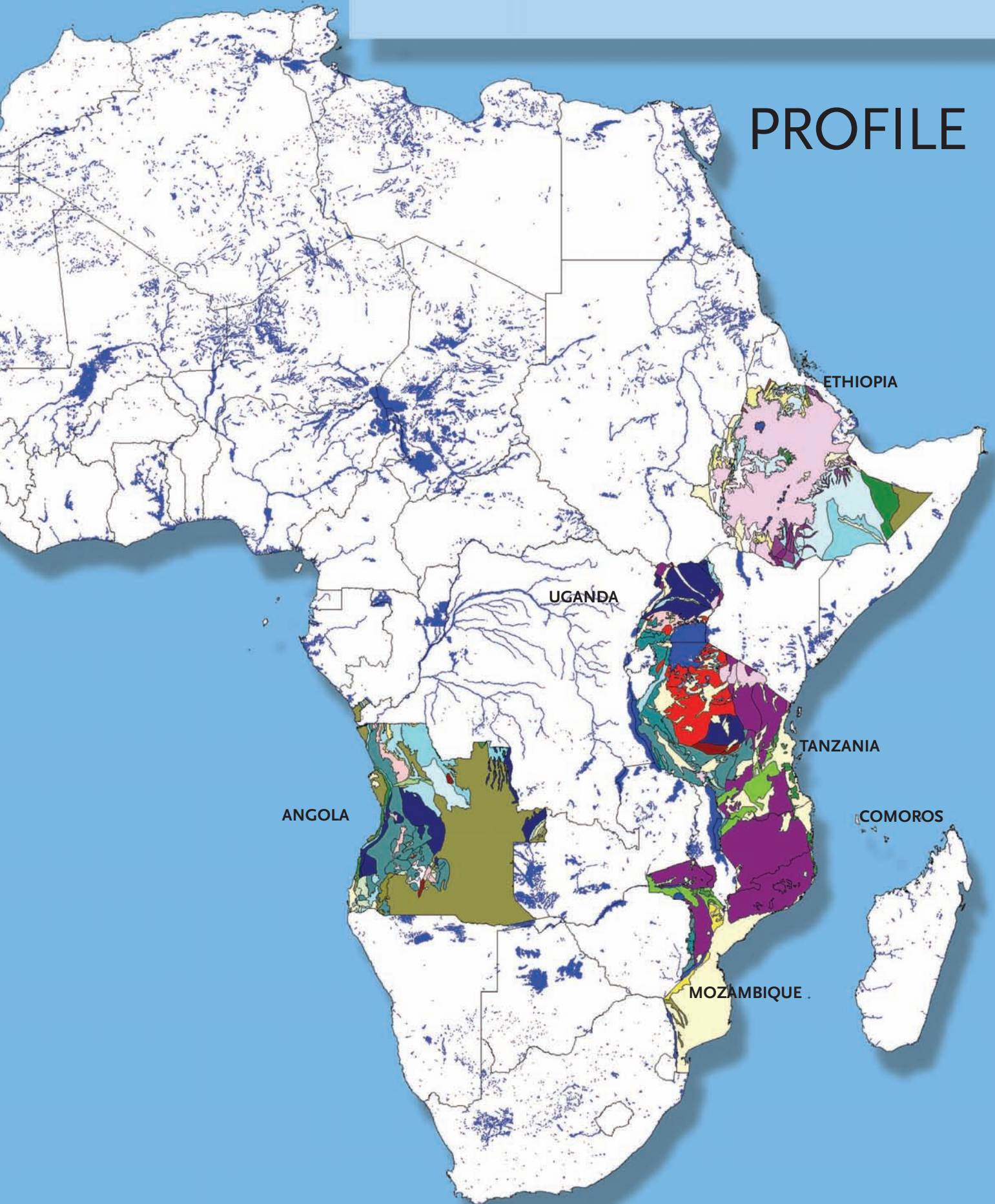


# SEAMIC

Southern and Eastern African Mineral Centre

*Your mineral services provider*

## PROFILE



ANGOLA

UGANDA

ETHIOPIA

TANZANIA

COMOROS

MOZAMBIQUE

# MESSAGE FROM THE DIRECTOR GENERAL



Today SEAMIC represents a successful example of regional co-operation and an important player in mineral resources development in the southern and eastern Africa sub-region.

SEAMIC is currently embarking on a new phase of its restructuring through expansion and diversification of its activities and enhancement of its capacity in order to assist its member States more effectively and efficiently.

Through its state-of-the-art and comprehensive geo-information facilities SEAMIC provides services, that include: GIS and Remote Sensing applications and training in geology and mineral exploration, geo-spatial databasing, archiving of geo-information, production of thematic maps, digitization of geo-data and consultancy in geo-information management. SEAMIC has modern mineral laboratories with the capacity to provide chemical analysis, ore testing and beneficiation, mineralogical and petrological analysis, gemmology, and industrial minerals application services.

With the establishment of an Environmental Laboratory, SEAMIC will be able to carry out environmental impact assessment studies including groundwater and surface water management, and analysis of subsoil pollution. This is no surprise, given the fact that water remains to be the most important commodity and the environmental problems associated with it will continue to be a major public concern. Feasibility studies for the development of minerals now constitute a standard section on possible environmental impact on the future mining operations. SEAMIC will continue to offer the Governments and other stakeholders in the region a reliable facility, in case of doubt, to obtain a second opinion regarding the outcome of such studies.

The richness and diversity of gemstone resources in the sub-region are quite well known worldwide. Gemstone mining plays an important and in some cases decisive role in the economy of some of the SEAMIC member States. However and despite the abundance and continued extraction of the resources, indigenous gemstone based industries are rare. Most of the regions gemstones are sold in their rough forms. The establishment of a Gemstone cutting, polishing and treatment unit at SEAMIC is intended to contribute towards bridging this gap and will therefore promote the development of small-scale gem cutting and processing industries in the sub-region.

The best way to secure quality and to demonstrate to the outside world that services of international standard are offered, is by acquiring ISO Certification. This will give the SEAMIC laboratories the prestige to fully penetrate the market in the region and generate the income needed to guarantee long-term sustainability. The process to achieve the ISO Certification has already been initiated and SEAMIC expects to acquire it before the end of year 2005.

SEAMIC is also involved in regional initiatives that are aimed at promoting sustainable development of the mineral sector in Africa. SEAMIC's contribution to regional initiatives can particularly be considered in terms of capacity building; promotion of regional-information networks; development of the capacity for the management of mineral wealth, promotion of small scale mining projects specially industrial minerals for poverty alleviation in the rural communities and promotion of mineral resource cluster development.

Nowadays, there is a firmly established broader consensus, which recognises that the private sector has an important role to play in economic growth and poverty reduction. SEAMIC is laying emphasis on the involvement of the private sector in its activities, and this will further be demonstrated through new modalities that are embodied in the Shareholders Agreement. When implemented, the Shareholders Agreement, is expected to foster a closer relationship between SEAMIC, its partners and customers as well as to meet the needs of the relevant target industries.

SEAMIC, as a pioneering institution, is earning its place as part of Africa's system of promoting development in the mineral sector whilst always keeping in mind social, economic and environmental aspects.

A handwritten signature in black ink that reads "Diamantino Pedro Azevedo". The signature is written in a cursive, flowing style.

**DIAMANTINO PEDRO AZEVEDO**  
DIRECTOR GENERAL



# SEAMIC

Southern and Eastern African Mineral Centre

## CONTENTS

MESSAGE FROM THE DIRECTOR GENERAL

INTRODUCING SEAMIC 2

ORGANISATIONAL STRUCTURE OF SEAMIC 4

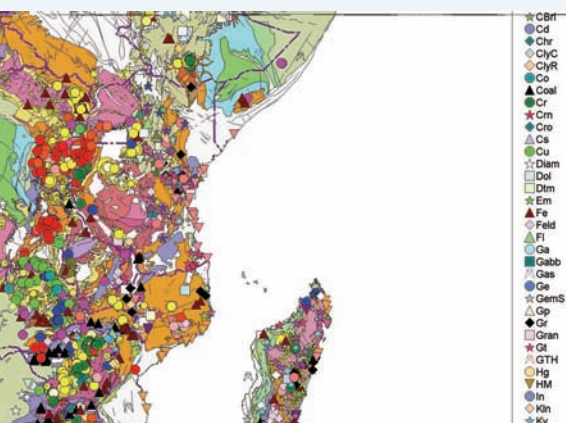
SEAMIC's SERVICES 6

HOW TO REACH US 9



# INTRODUCING SEAMIC

The Southern and Eastern African Mineral Centre (SEAMIC) is an independent regional centre of knowledge and information for southern and eastern Africa established in 1977, under the umbrella of the United Nations Economic Commission for Africa (UNECA). Founder Member States are Ethiopia, Mozambique and Tanzania, later on joined by Angola, the Comoros and Uganda. Membership is open to all other countries of the eastern and southern African sub-region.



## MISSION

To promote socio-economic and environmentally responsible mineral development in eastern and southern Africa.

## VISION

To be a pioneer and leader in the provision of mineral services in eastern and southern Africa.

## MANDATE

To be a Centre of Excellence and Significance able to provide specialised services for the mineral industries and the overall development of the sector in the region.

### The mandate will be accomplished through:

- > Promoting public awareness on the potential of the mining sector's contribution to the economic and social development of the sub-region;
- > Facilitating the efficient exploitation of mining prospects with the highest potential for economic and social impact;
- > Promoting responsible investment and encouraging the free flow of capital, labour, goods and services for sustained mining sector development in the sub-region;
- > Facilitating the harmonisation of mineral sector policies and the legal framework surrounding mineral activities as well as to improve the competitiveness of legal and fiscal regimes in the sub-region;
- > Promoting indigenous capacity and mineral resource - based industrialisation; and
- > Facilitating access, co-ordination and harmonisation of mineral resources development and associated support services within the sub-region, and the establishment of sub-regional networks of programmes and services.



## OBJECTIVES

### SEAMIC's main objectives are:

- > To facilitate the co-ordination harmonisation and access to mineral resources development and provisions of support services in the sub-region;
- > To establish, where relevant, sub-regional networks of programmes and services and to promote regional collaboration;
- > To promote indigenous mineral based industrialisation;
- > To promote awareness on the potential of the mineral sector's contribution to the economic and social development of the sub-region;
- > To promote responsible investment and free flow of capital, labour,

- goods and services for mining sector development in the sub-region;
- > To facilitate the promotion of mining prospects with the highest potential for economic and social impact; and
- > To facilitate the harmonisation of mineral sector's policies and legislation in the sub-region.

### INSTITUTIONAL CULTURE AND VALUES

In order to win continuous support of the governments and other stakeholders, SEAMIC is keen on developing relevant programs that are aimed at promoting sustainable development of the mineral sector in member countries. By the same token, the institution will undertake commercial activities aimed at generating enough income to reduce the level of budgetary contributions from member States over a period of time. This is in line with the prevailing environment, which requires the adoption by all institutions of a more corporate like management approach and an improved client focus and adaptation to customers needs. Accountability and transparency will be embodied in the management principles to guarantee a confident support from the stakeholders.

The new institutional culture will also be based on collective responsibility, team spirit, improved internal communication, and development of a corporate identity. Staff will be required to be more innovative and responsible. They will be recruited on the basis of well-defined job descriptions allowing for continuous evaluation of their performance. Professional performance will continue to be the basis for the scale of remuneration with the associated performance related remuneration schemes and incentive packages. Staff performance will be regularly reviewed so as to improve productivity, encourage dialogue, promote excellence and motivation.

Great emphasis will be placed on Management and staff contribution to the well being of SEAMIC. The need for all to acquire the spirit of collective responsibility for the benefit of SEAMIC as well as for all will also be emphasised. At the individual level, this will ultimately depend on the staff member's ability and capacity to permanently refocus and redirect activities. This will provide an impact on SEAMIC's products and service quality and allow the institution to survive in a competitive and constantly changing, fast moving market and modern technological environment.

SEAMIC is recognisant of the increasingly important role that the private sector is playing in the development of mineral resources. The private sector is thus encouraged to become a stakeholder of the Centre and possibly be associated with the planning, execution and monitoring of SEAMIC's activities.

While applying business-like management and principles to achieve quality and efficient performance, SEAMIC will continue to emphasise its development role and nature.

### GUIDING PRINCIPLES

**In implementing its activities the Centre is guided by the following principles:**

- > Complementing existing facilities and expertise in the sub-region;
- > Focusing on consumer and results oriented projects and services;
- > Enhancing collaboration between key stakeholders in the governments, private sector, academia and donor community to avoid duplication of efforts and to achieve maximum results and impact; and
- > Developing and providing services and products with the highest economic potential, social and environmental benefits and impact.



# ORGANISATIONAL STRUCTURE OF SEAMIC



**“... SEAMIC REALISES ECONOMIES OF SCALE BY POOLING THE REGION’S RESOURCES IN OFFERING A CENTRE OF EXCELLENCE, WHICH IS ABLE TO PROVIDE SPECIALISED SERVICES OF VARYING NATURE FOR THE REGIONAL MINERAL INDUSTRIES...”**

## **THE GOVERNING COUNCIL**

The highest decision making organ of SEAMIC is the Governing Council (GC) which consists of the Ministers responsible for mining in the member states. The GC, whose chairmanship rotates, meets once a year. At these meetings, SEAMIC's annual report of the previous financial year (July - June) - together with a working plan for the following financial year - are discussed and approved. In addition, other matters, related to the policy and the operations of the Centre, are also discussed.

## **THE STANDING COMMITTEE OF OFFICIALS**

Prior to the GC meeting, the Standing Committee of Officials (SCO) meeting (comprising the permanent secretaries or equivalent officers in the ministries of mines of the SEAMIC member states) takes place at the same time and location. The SCO prepares the GC meeting in more technical details. The SCO meeting is chaired by the Executive Secretary of the United Nations Economic Commission for Africa (UNECA) or his representative.

## **THE BOARD OF DIRECTORS**

The Board of Directors (BOD) of SEAMIC meets twice or thrice a year usually at SEAMIC's premises.

## **THE DIRECTOR GENERAL**

The Director General (DG) of SEAMIC serves for a maximum period of two terms of four years each. The candidates are selected preferentially among citizens of SEAMIC member States. The post of the Director General is widely advertised in the eastern and southern African sub-region, when it falls vacant. The selection panel is chaired by the Executive Secretary of UNECA.

## **OPERATIONAL FRAMEWORK**

Apart from the office of the Director General, the Centre comprises two technical departments namely: Geo-Information Department and Laboratory Services Department.

The underlisted are also providing support and technical services under direct supervision of the Director General:

- > Administration and Finance Section
- > Quality Management Team
- > Planning, Marketing and Business Development Section
- > Human Resources Committee

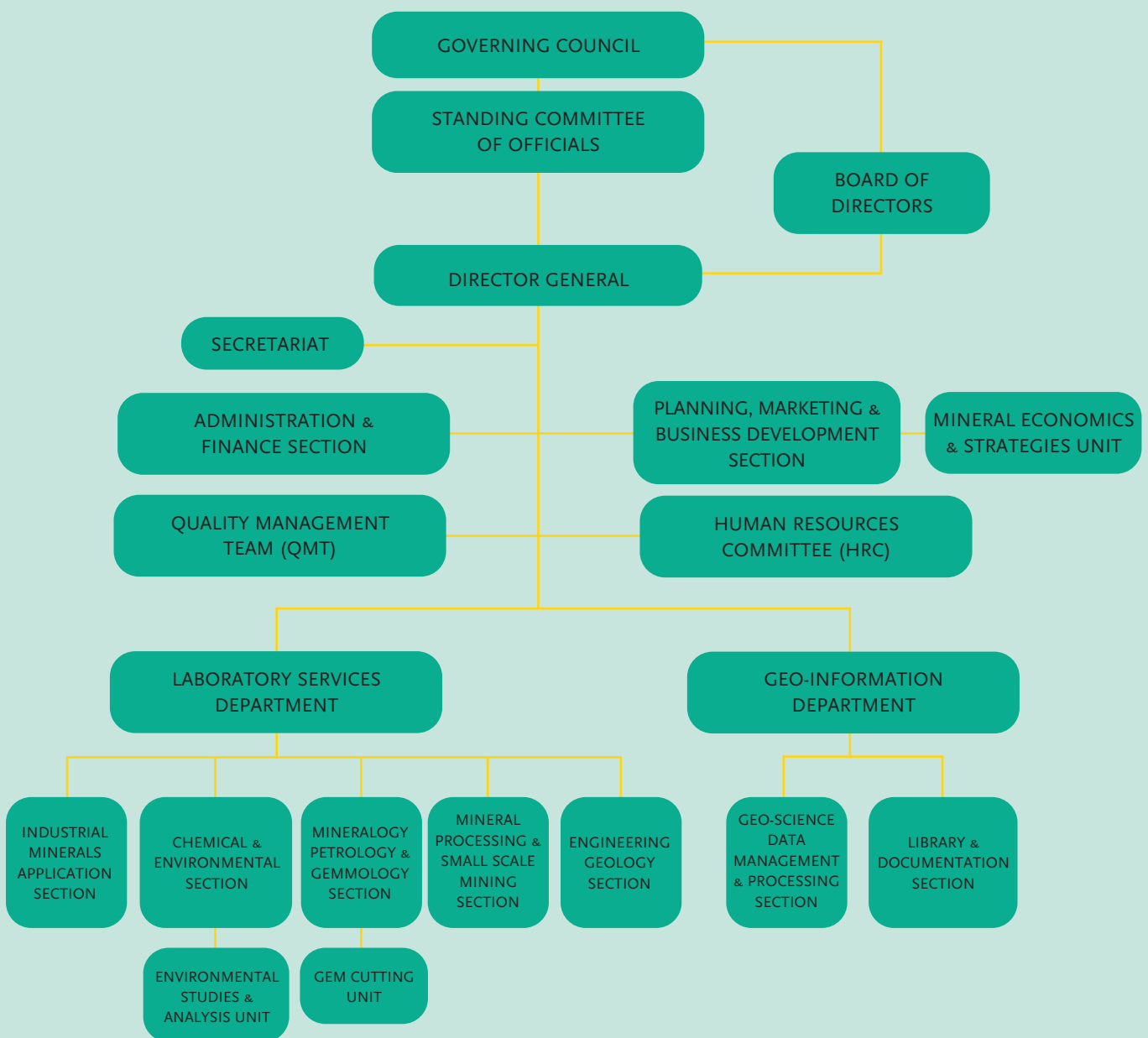
## **ASSETS**

The SEAMIC member states with the assistance of several development partners have built a very well equipped facility in Dar es Salaam, Tanzania. This is more significant in the field of industrial minerals, such that the Centre possesses facilities and capacities for the characterization, and development of applications of these minerals, which are not easily available in the sub region. The Centre's physical assets are valued at more than US\$ 6 million and include the most modern laboratory apparatus and data processing facilities.

SEAMIC possesses comparative advantage to transform itself into a Centre of Excellence for the provision of cost effective services for the development of the mineral resources of the sub-region. This is mainly due to its geographic coverage, the economies of scale it can realize, privileged relations with governments of the sub-region, its implementation capacity, and the support it gets from the development partners.

The institution conducts applied research and development activities particularly for industrial minerals development, small-scale production of ceramics, specialized training, commercial laboratory work and consultancy service upon request.

## ORGANISATIONAL CHART



# SEAMIC's SERVICES

SEAMIC offers its services through its Geo-information and Laboratory Services Departments.



The following services are provided by SEAMIC:

## TRAINING

- > Minerals laboratory management
- > Environmental analysis and Environmental Impact Assessment studies
- > Mineral testing methods
- > Gemmology and gem cutting
- > Pottery and ceramic technology
- > Geophysics, geochemistry, environmental geology and geoscience data handling
- > GIS and remote sensing applications
- > Mineral exploration and geological mapping
- > Resource and reserve modeling



## ANALYTICAL SERVICES

- > Sample preparation
- > Wet chemistry for whole rock analysis
- > Mineral beneficiation such as mineral separation and leaching
- > XRF and XRD analysis
- > Fire assay gold analysis and purification
- > AAS, Graphite furnace and hydride generation analysis
- > Rock and mineral identification
- > Petrological and mineralogical analysis
- > ICP analysis
- > Mercury Analysis

## MINERAL APPLICATIONS

- > Industrial minerals application





- > Processing and upgrading of minerals
- > Pottery and ceramic technology

#### **GRADING AND CERTIFICATION**

- > Gem identification, grading and certification
- > Diamond Grading
- > Gem-cutting, polishing and treatment

#### **RESEARCH AND DEVELOPMENT**

- > Evaluation of raw materials for industrial application
- > Mineral recovery operations
- > Development of a granulation system for the beneficiation of phosphate ore
- > Development of ceramic tableware, low tension electrical insulators and fire clay crucibles
- > Development of geo-database and web mapping
- > Development of safe methods for disposal of hazardous chemical wastes

#### **GEO-INFORMATION**





- > Scanning, digitising and plotting of maps
- > GIS compilation and applications
- > Regional mineral databases
- > "One-stop-shop" for mineral data:
- > Airborne radiometric data calibration
- > Geophysical surveying for groundwater and mineral exploration

#### **TECHNICAL ASSISTANCE FOR MINERAL EXPLORATION**

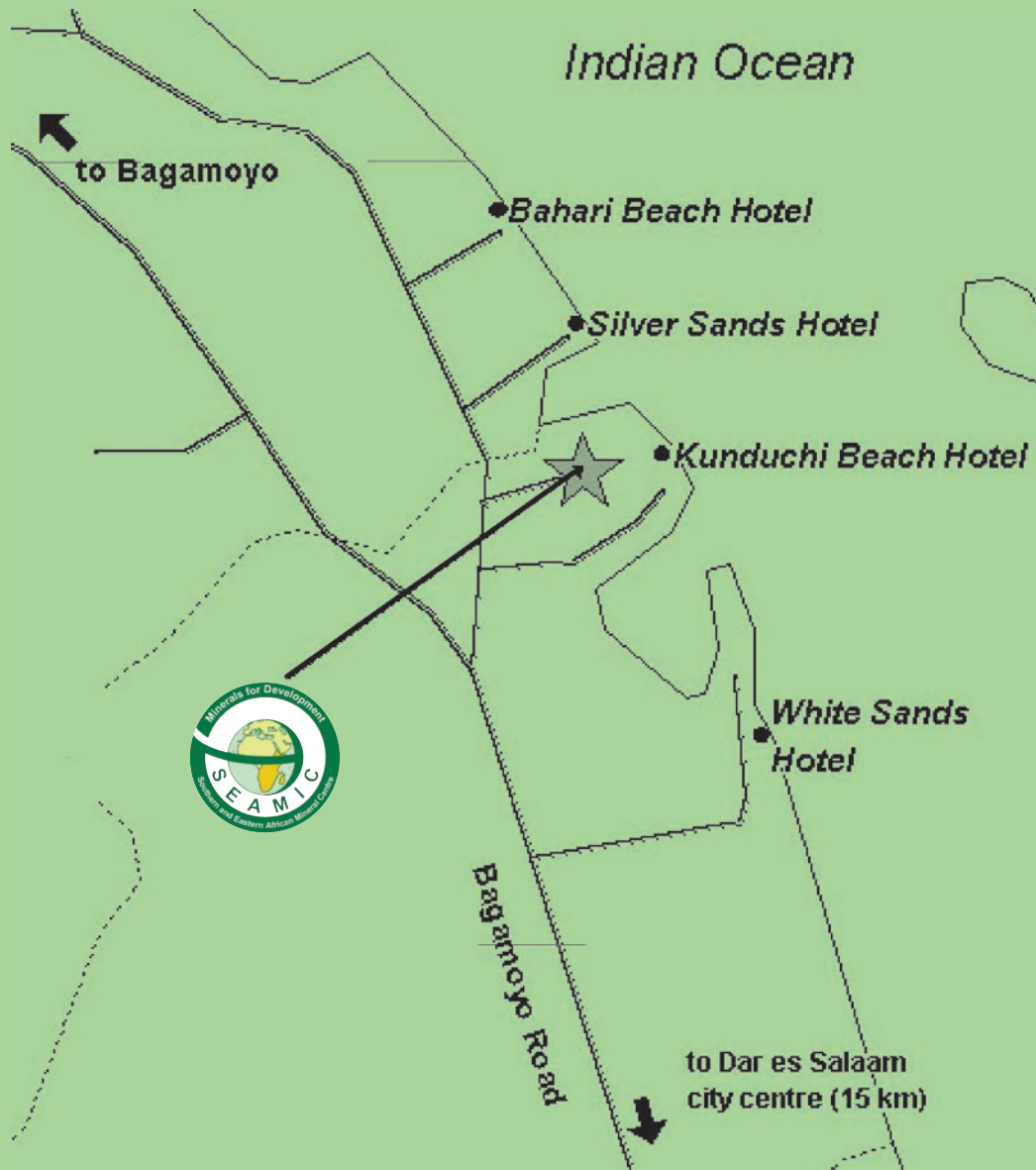
- > Integrated prospecting techniques for survey, geological structure, remote sensing and geophysical prospecting
- > Assistance for modernisation of small to medium scale mining operations
- > Investigation on environmental protection
- > Geotechnical investigation
- > Feasibility studies for small to medium scale mining projects



#### **CONSULTANCY**

- > Industrial minerals application
- > Preparation of bankable feasibility studies for small to medium scale mining projects
- > Evaluation of environmental impact assessment studies
- > GIS data base design & development
- > Geo data processing and GIS system development
- > Mineral and ground water exploration
- > Management of mineral wealth
- > Development of mineral recovery system

# HOW TO REACH US



SEAMIC is located at Kunduchi Beach Area. From Bagamoyo Road turn right in the direction of Bahari Beach Hotel, continue for about 3.7 Km until you see a sign post for SEAMIC on the right side of the road. Turn right and follow the road for about 900 m, then turn left and then right and you will see the sign for SEAMIC main entrance. There is adequate space for parking trucks while unloading samples.

Contact person:  
**Director General**  
**SEAMIC**  
P.O. Box 9573  
Dar es Salaam  
Tanzania

Telephone: (255 22) 2650320/21/47  
Fax: (255 22) 2650319  
E-mail: [seamic@seamic.org](mailto:seamic@seamic.org)  
Website: [www.seamic.org](http://www.seamic.org)



**Southern and Eastern African Mineral Centre**

P.O. Box 9573

Dar es Salaam, Tanzania

Telephone: (255 22) 2650320/21/47

Fax: (255 22) 2650319

E-mail: [seamic@seamic.org](mailto:seamic@seamic.org)

Website: [www.seamic.org](http://www.seamic.org)

